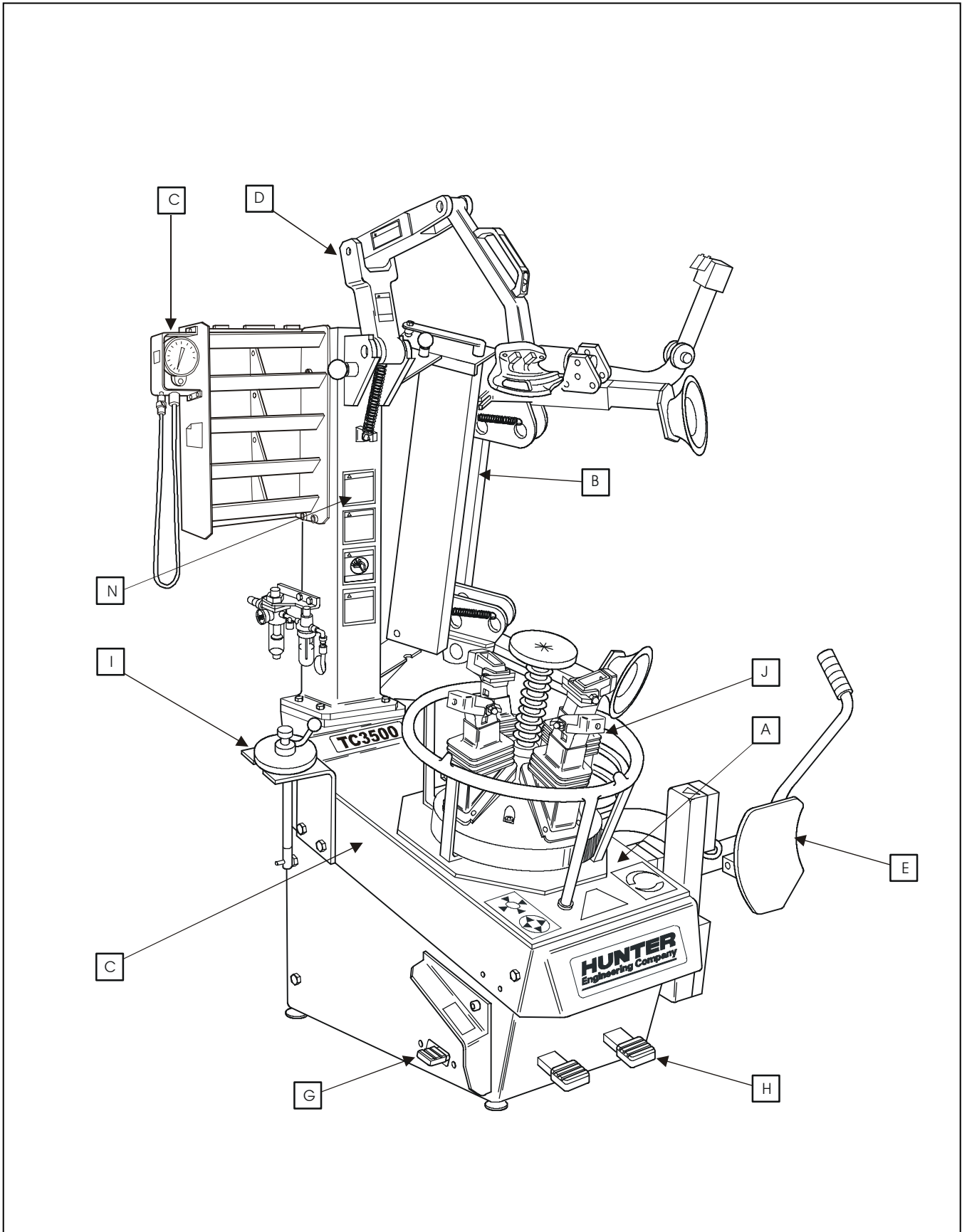


TC3500SS TIRE CHANGER

© 2006 - 2009 Hunter Engineering Company



TC3500SS TIRE CHANGER
REFER TO NEXT SHEET FOR PARTS DESCRIPTION LISTING

TC3500SS Tire Changer

No.	Part Number	Description
A	RP6-2983	Housing (Sheet 3)
B	RP6-1361	Column Assembly (Sheet 4)
C	RP6-7024	Pressure Gauge Unit (Sheet 4 & 5)
D	RP6-2420	Bead Roller Assembly (Sheet 6)
E	RP640642	Side Shovel Assembly (Sheet 7)
F	RP6-2286	Hydraulic Pump (Sheet 8) (Not Illustrated)
G	RP6-2173	Pedal Protection (Sheet 9)
H	RP6-2983	Pedal Board Assembly (Sheet 10)

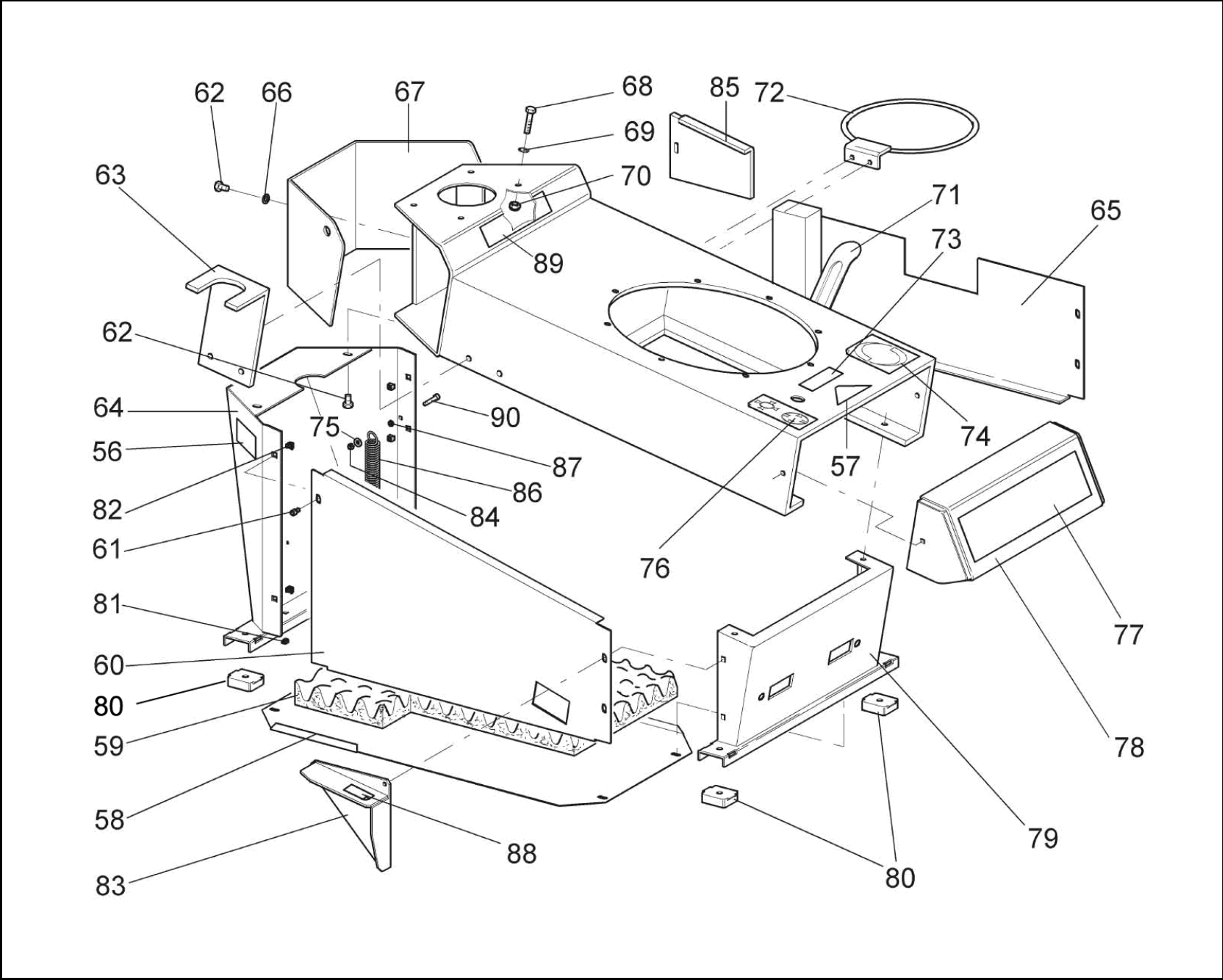
No.	Part Number	Description
I	RP6-1637	Motor Complete (Sheet 11) (Not Illustrated)
J		Self Centering Clamping System (Sheet 12)
K		"C" ASME Reservoir (Sheet 13) (Not Illustrated)
L		Compression Spring (Sheet 14) (Not Illustrated)
M		Bead Tail Depressor (Sheet 15) (Not Illustrated)
N		Decal Placement (Sheet 16)
O	RP6-1572	Wheel Lift Kit (Optional) (Not Illustrated) (Sheet 17, 18, 19)
P		

**TC3500SS Standard
Accessory Kit**

Part Number	Description
20-1644-1	24" Wheel Extension Kit
RP6-3784	Mounting Paste 3.5 kg
RP6-11216	28" Bead Depressor Tail with Traction Beam
148-133-2	Lubrication Oil
145-341-2	Tire Inflator/Air Chuck
179-15-2	Safety Goggles
RP6-2413	Mechanical Bead Pusher

Part Number	Description
RP6-2663	"HM" Bead Lever
RP6-0326	Bead Lever Protector Sleeve
RP6-0322	Traditional Bead Lever
RP6-0343	Extra Mount/ Demount Head
RP6-1506	Applicator Brush
RP6-11257	Force Multiplier

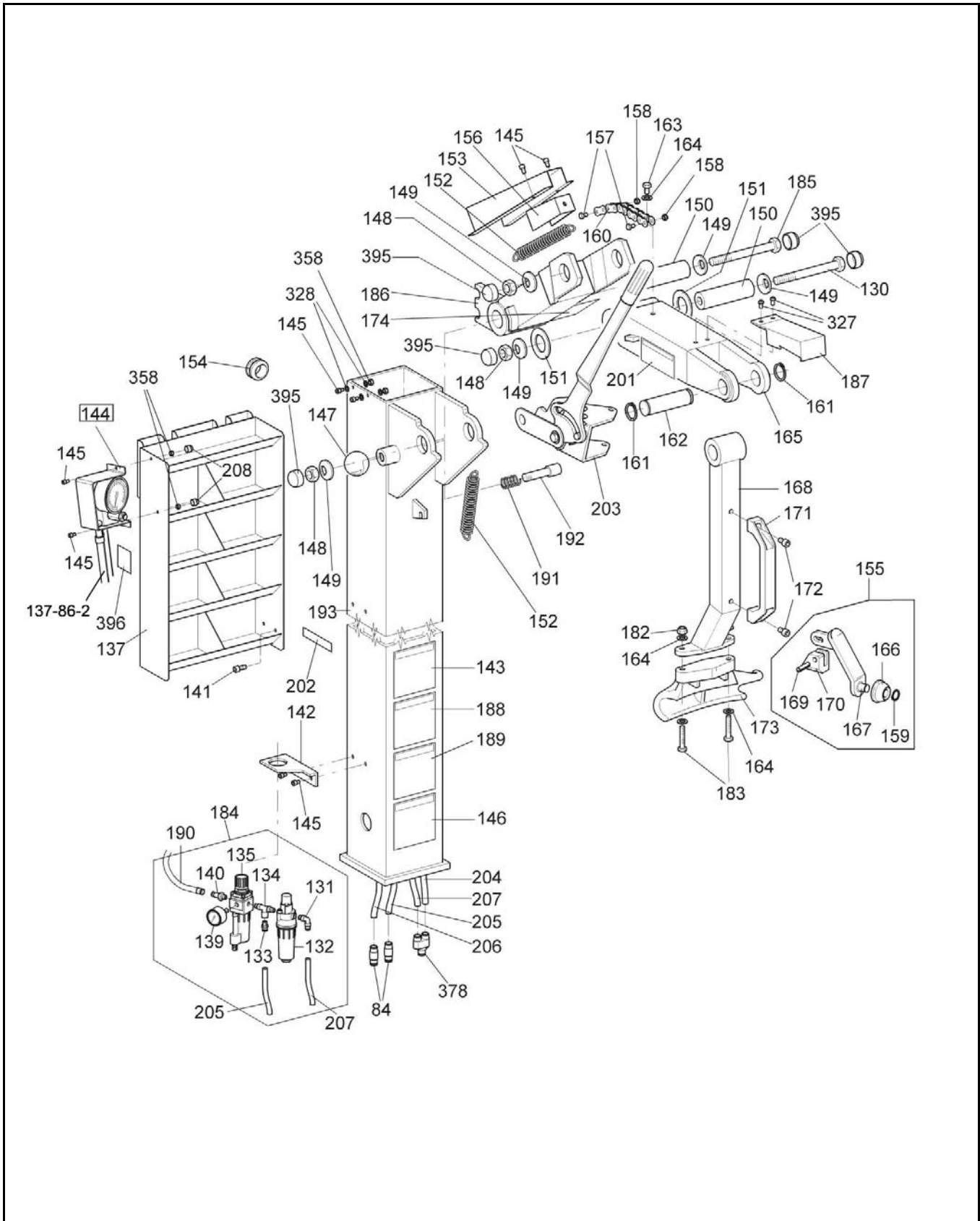
* See Form 4042T for all tire changer accessories available.



TC3500SS TIRE CHANGER
REFER TO NEXT SHEET FOR PARTS DESCRIPTION LISTING

No.	Part Number	Description
56	RP6-1595	Lubrication data plate
57	RP6-3788	Evo Series name plate
58	RP6-12479	Lower closing plate
59	RP6-1803	Sponge
60	RP6-12481	Left case
61	RP6-0250	TCEI M6x16 screw
62	RP6-0974	TE M8x12 UNI 5739 Zn screw
63	RP6-1347	Device support
64	RP6-12263	"C" rear feet
65	RP6-12482	Right case
66	RP6-0249	D.8,4 washer
67	RP6-0026	Rear guard
68	RP6-1811	TE M10x35 screw
69	RP6-0247	D.10,5 washer
70	RP6-1812	Triblok M10 nut
71	RP6-0322	Bead lifting lever
72	RP6-0223	Grease holding ring
73	RP6-2063	Bead breaker plate

No.	Part Number	Description
74	128-503-2	Rotation direction plate
75	RP6-1943	6,6x18x2 UNI 6593 washer
76	128-502-2	Clamping direction plate
77	128-279-2	Hunter plate
78	RP6-0030	Front guard
79	RP6-12219	"C" front foot
80	RP6-2528	Rubber foot
81	RP6-1222	M6 UNI 5587 middle nut
82	RP6-0012	M6 crated nut
83	RP6-2173	Pedal protection
84	RP6-0292	M6 UNI 7473 self-locking nut
85	RP6-1946	Closing triangle
86	RP6-0691	2x20x179 T spring
87	RP6-0281	M6 UNI 5589 low nut
88	128-286-2	Danger plate
89	128-601-2	TC3500 plate
90	RP6-1671	TCEI M6x25 UNI 5931 screw



TC3500SS TIRE CHANGER

REFER TO NEXT SHEET FOR PARTS DESCRIPTION LISTING

PARTS DESCRIPTION LISTING

No.	Part Number	Description
84	RP6-0622	D.8 junction
130	RP6-12757	TE M14 x 150 screw
131	RP6-0142	8-1/4" L fixed union
132	RP6-8985	C series lubricator
133	RP6-0201	8 - 1/4" fitting
134	RP6-1000	1/4"-1/4" T union
135	RP6-7203	Filter C104 DS11
137	-	(See Sheet 5a)
139	RP6-0141	D. 40 pressure gauge
140	RP6-1543	Male rapid coupling
141	RP6-0250	TCEI M6 x 16 screw
142	RP6-1462	Unit support
143	RP6-1680	Warning plate
144	**RP6-7024	S12 USA Pressure Gauge Unit
145	RP6-1244	TCEI M6 x 12 screw
146	RP6-2369	Attention plate
147	RP6-0832	Knob
148	RP6-2185	M14 Triblok nut
149	RP6-0251	D.14,2 Belleville washers
150	RP6-0078	D. 35 pin
151	RP6-0080	Shim adjusting ring
152	RP6-0162	22 x 3 x 120 T spring
153	RP6-1498	Guard for spring
154	RP6-1413	Rubber-made fairlead
155	RP6-G1000A7	Roller with support
156	RP6-1499	Clamp for spring
157	RP6-0963	TE M5 x 20 screw
158	RP6-1281	M5 autoblock nut
159	RP6-1260	D. 14 seeger ring
160	RP6-1130	Chain for spring
161	RP6-0255	D.25 seeger
162	RP6-0079	D. 25 pin
163	RP6-0347	VTE M8 x 35
164	RP6-0249	D.8,4 washer
165	RP6-1409	Horizontal arm

No.	Part Number	Description
166	RP6-2412	Roller
167	RP6-2419	Roller support
168	RP6-7900104000	Vertical arm
169	RP6-2414	Elastic pin 8 x 30
170	RP6-2411	Guide block
171	RP6-0095	Handle
172	RP6-0256	TCEI M8 x 16 screw
173	RP6-0343	Mounting Head
174	RP6-2372	Attention plate
182	RP6-0267	M8 autoblock nut
183	RP6-0796	TE M8 x 40 screw
184	RP6-7142	USA conditioning unit
185	RP6-0253	TE M14 x 140 screw
186	RP6-1154	Supplementary Arm
187	RP6-2181	Arm protection
188	RP6-1681	Warning information plate
189	RP6-1679	Symbol warning plate
190	RP6-2152	Female rapid coupling
191	RP6-1411	1,2 x 17,5 x 72 C spring
192	RP6-1341	Pawl
193	RP6-1361	"C" Column
201	RP6-2047	Remove clip plate
202	RP6-0006	Pression plate
203	RP6-8832	"C" force multiplier kit
204	RP6-1566	8 x 6 black rilsan pipe L= 1265
205	RP6-1563	8 x 6 blue pipe L=210
206	RP6-1948	8 x 6 red pipe L=1200
207	RP6-6351	8 x 6 black rilsan pipe L= 250
208	RP6-2175	Protection plug
327	RP6-1420	TBBEI M6 x 16 screw
328	RP6-1163	D. 6 washer
358	RP6-0270	M6 high nut
378	RP6-325181	V 8 union
395	RP6-2177	Protection plug
396	RP6-1990	"Manual T" plate

****NOT AVAILABLE AS A WARRANTY ITEM AFTER 90 DAYS PAST INSTALL DATE.**

****This field replaceable motor works with all applications of the TC3250 and TC3500 Tire Changers.**

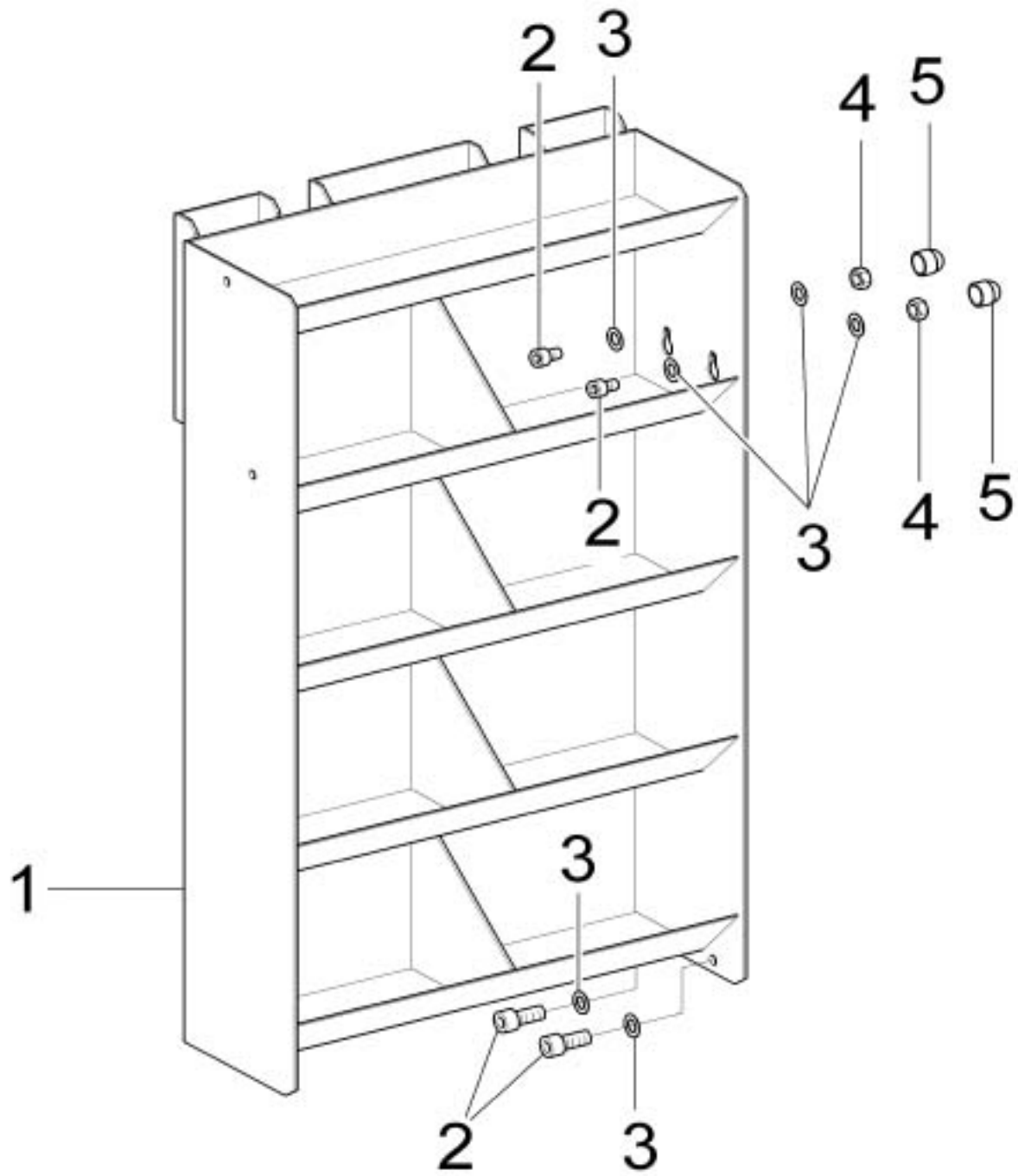


No.	Part Number	Description
	**RP6-7024	SIZ USA Pressure Gauge Unit
1	RP6-0499	2,62 x 5,23 OR gasket
2	RP6-0558	Deflation pushbutton
3	RP6-0559	Release pushbutton plug
4	RP6-0718	VSC 1/4" membrane
5	RP6-7302	Rapid release body
6	RP6-7303	Rapid release cover
7	RP6-7867	TAUT 2,9 x 13 UNI 6954 screw

No.	Part Number	Description
8	RP6-0843	1,78 x 10,82 OR gasket
9	RP6-9179	1,78 x 26,70 OR gasket
10	RP6-0556	Pressure gauge support
11	RP6-1244	TCEI M6 x 12 UNI 5931screw
12	RP6-7026	D.80 60 PSI pressure gauge
13	RP6-6512	USA inflation pipe
14	RP6-1708	8 - 1/4" rotary L union
15	RP6-7204	Tire valve

****NOT AVAILABLE AS A WARRANTY ITEM AFTER 90 DAYS PAST INSTALL DATE.**

****This field replaceable motor works with all applications of the TC3250 and TC3500 Tire Changers.**



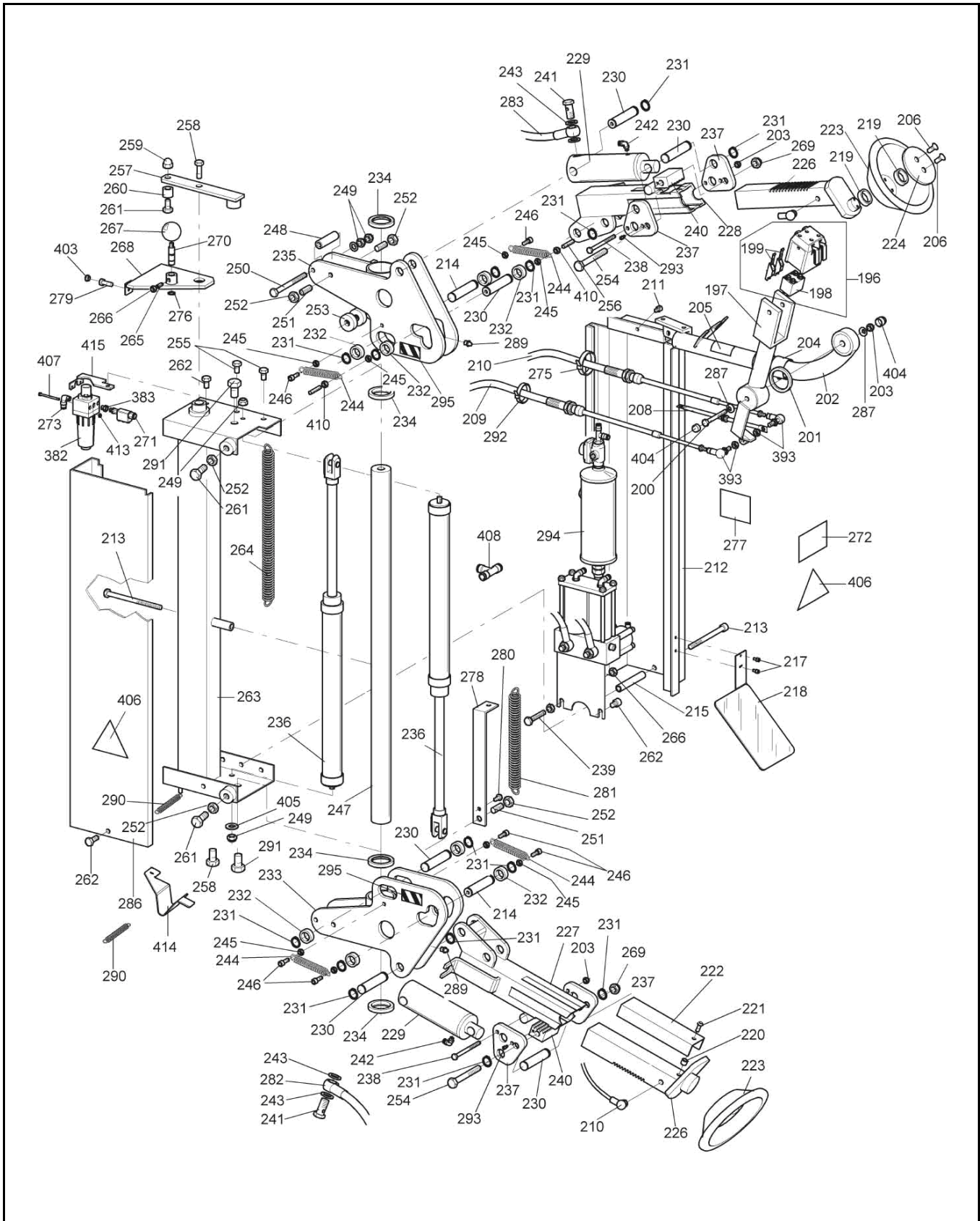
TC3500SS TIRE CHANGER

REFER TO NEXT SHEET FOR PARTS DESCRIPTION LISTING

PARTS DESCRIPTION LISTING

Index No.	Part Number	Description
1	RP6-1358	Tool Storage
2	RP6-206019	TCEI M6 x 16 screw
3	RP6-1163	6,4 flat washer

Index No.	Part Number	Description
4	RP6-0270	M6 high nut
5	RP6-2175	Cap Protection



TC3500SS TIRE CHANGER

REFER TO NEXT SHEET FOR PARTS DESCRIPTION LISTING

No.	Part Number	Description
196	**RP6-1391	Control box
197	RP6-0946	"C" handle
198	**RP6-1539	Control valve
199	RP6-4172	Lever positioner
200	RP6-1554	TE M6x55 screw
201	RP6-1101	Guide for handle
202	RP6-0947	Handle support
203	RP6-0292	M6 autoblock nut
204	RP6-1724	Indicator for diameters
205	RP6-6928	Diameter data plate
206	RP6-0782	TSPEI M6x16 UNI 5933 Zn screw
208	RP6-1545	Adjustable tie rod
209	RP6-0919	Cable L= 1475
210	RP6-0918	Cable L= 1775
211	RP6-0287	TCEI M8x10 UNI 5931 zn screw
212	RP6-1343	External casing
213	RP6-1031	TE M8x110 screw
214	RP6-1415	Pin for spring
215	RP6-1327	Spacer for guard
217	RP6-0794	TAUT M2.9x9.5 UNI 6954 Zn h screw
218	RP6-1382	"C" mirror
219	RP6-1386	31-38,5-4,5 v gasket
220	RP6-1378	Spacer for protection
221	RP6-1420	TBEI M6x16 UNI-ISO 7380 Zn screw
222	RP6-1377	Arm protection
223	RP6-710290710	Roller with Bearing
224	RP6-1340	Washer for roll
226	RP6-0927	Mobile arm
227	RP6-0931	Lower arm
228	RP6-0930	Upper arm
229	RP6-0837001	D. 40 cylinder
230	RP6-1339	Pin
231	RP6-1387	D.16 seeger ring
232	RP6-1338	Roller
233	RP6-0928	Lower arm support
234	RP6-1380	Scraper ring
235	RP6-0929	Upper cylinder support
236	RP6-2044	Approach cylinder
237	RP6-0851	Lever
238	RP6-1385	TE M6x75 screw
239	RP6-0262	TE M8x50 screw
240	RP6-0932	Toothed block
241	RP6-1376	Drilled coupling D=1/4
242	RP6-325030	D.4-M5 union
243	RP6-1071	CU washer
244	RP6-1778	2x12x54 T spring
245	RP6-0281	M6 UNI 5589 low nut
246	RP6-0250	TCEI M6x16 UNI 5931 screw
247	RP6-1354	Vertical guide
248	RP6-1325	Spacer for support
249	RP6-0267	M12 autoblock nut
250	RP6-1389	TE M8x90 screw
251	RP6-1553	STEI M10x25 screw

No.	Part Number	Description
252	RP6-0259	M10 high nut
253	RP6-1294	Sliding block
254	RP6-1384	TE M12x80 screw
255	RP6-1556	TE M8x16 UNI 5739 Zn screw
256	RP6-8715	STEI M6x35 screw
257	RP6-1166	Lever for opening clamp
258	RP6-0245	TE M10x30 screw
259	RP6-1702	M10 blind nut
260	RP6-1337	Rubber for stopper
261	RP6-0416	TE M10x35 screw
262	RP6-0974	TE M8x12 DIN 6921 Zn screw
263	RP6-0926	Bead breaking frame
264	RP6-0853	2,5x22x290 t spring
265	RP6-1395	M8 positioning screw
266	RP6-0257	M8 UNI 5588 Zn high nut
267	RP6-0832	D=45 M1 ball knob
268	RP6-1333	Rear support
269	RP6-0500	M12 autoblock nut
270	RP6-1342	Bead breaking stopper
271	RP6-7351	1/8" 5-way connection
272	RP6-1636	Black tube indicating plate
273	RP6-0142	8-1/4" L fixed union
275	RP6-0178	3,6x142 hose clamp
276	RP6-1260	Ø 14 UNI 7435 seeger ring
277	RP6-1595	Lubrication data plate
278	RP6-1375	Support for spring
279	RP6-0318	TE M10x25 screw
280	RP6-0628	TE M6x12 UNI 5739 zn screw
281	RP6-0691	2x20x179 T spring
282	RP6-1049	H.P. pipe SAE 100 L= 850
283	RP6-1048	H.P. pipe SAE 100 L= 1070
286	RP6-1346	Inner guard
287	RP6-1584	6,2x12x0,5 Belleville washer
289	RP6-1309	D. 7 Oiler
290	RP6-1357	5x28x130 spring
291	RP6-2255	TE M12x25 UNI 5739 Zn screw
292	RP6-1949	3,5x280 clamp
293	RP6-1520	TCEI M4x12 UNI 5931 zn screw
294	RP6-1050	Pressure unit
295	RP6-1541	Danger indicating plate
382	RP6-8985	C series lubricator
383	RP6-6087	M-F 1/4"-1/8" nipple
393	RP6-1733	White M6 zn ball joint
403	RP6-2176	M10 nut protection plug
404	RP6-2175	M6 nut protection plug
405	RP6-0293	D.8,4x22x2,5 washer
406	RP6-2166	Bead breaker hand danger indicating
407	RP6-0732	TCEI M4x50 UNI 5931 zn screw
408	RP6-1537	T-4 union
413	RP6-1191	M4 middle nut
414	RP6-8726	Lower rubber for bead breaking
415	RP6-9243	Lubricator bracket

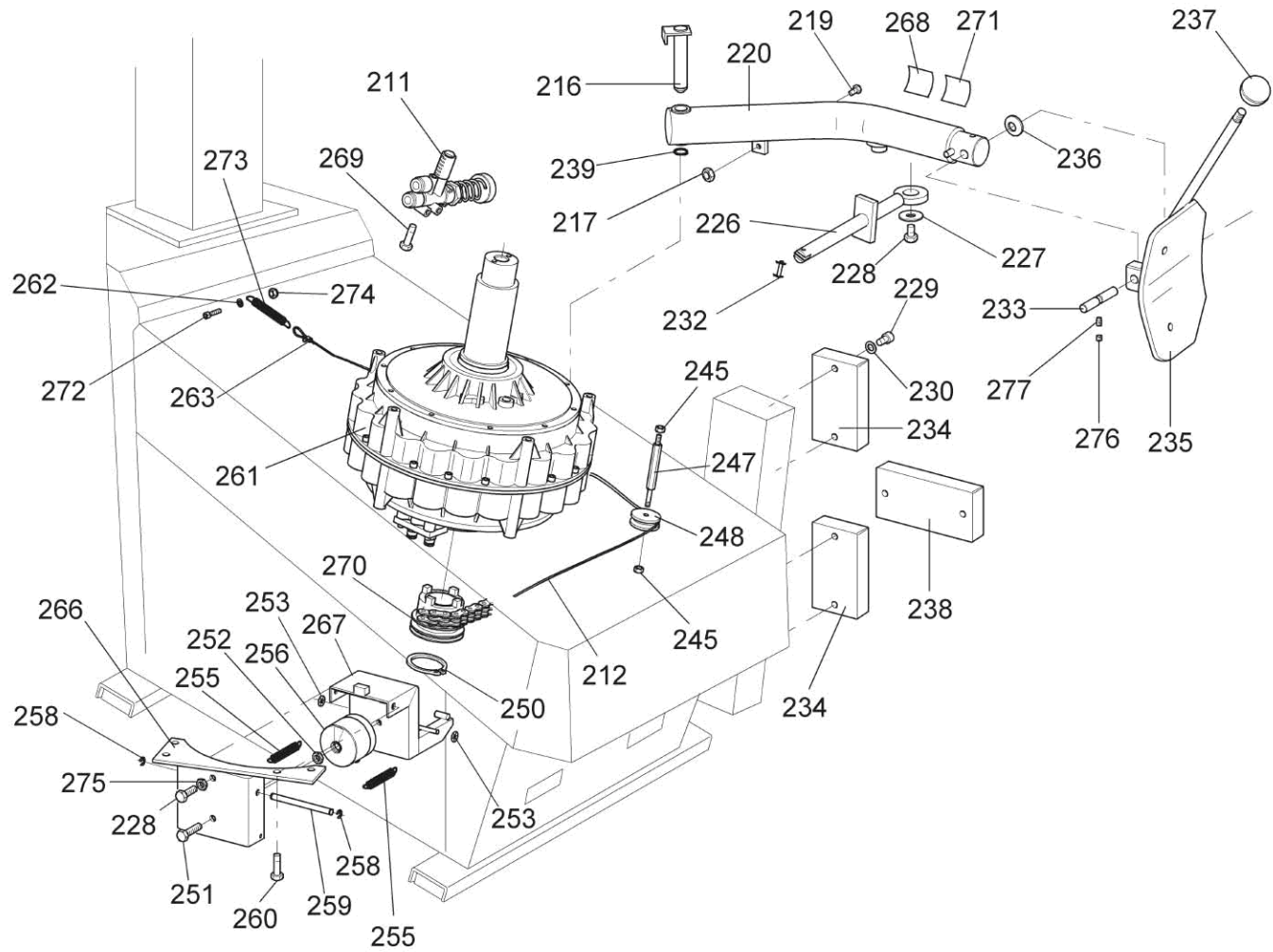
****NOT AVAILABLE AS A WARRANTY ITEM AFTER 90 DAYS PAST INSTALL DATE.**

****This field replaceable motor works with all applications of the TC3250 and TC3500 Tire Changers.**



000-Paint Code Required
A/R-As Required
REF-Reference

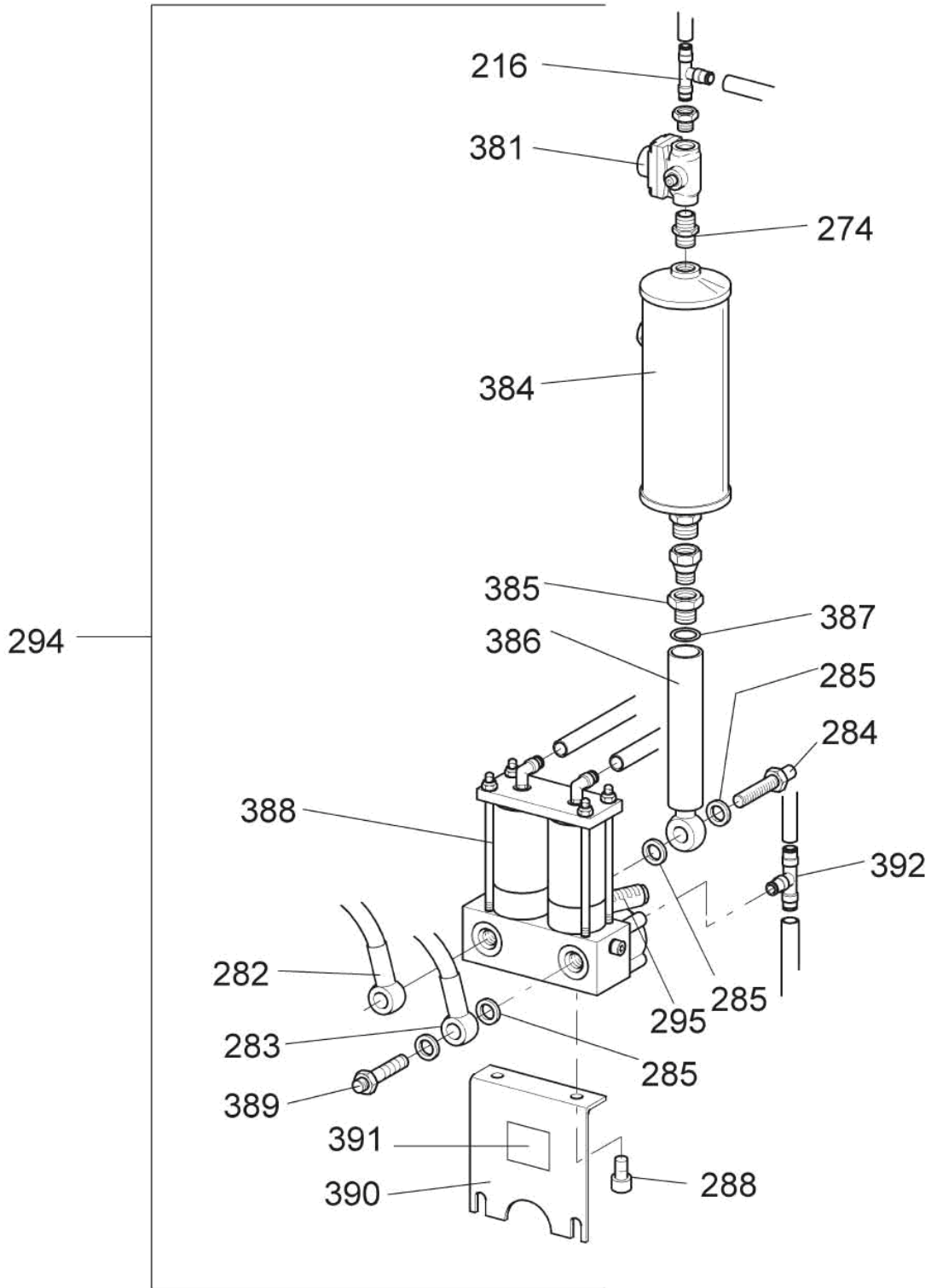
TC3500SS TIRE CHANGER
REFER TO NEXT SHEET FOR PARTS DESCRIPTION LISTING



No.	Part Number	Description
211	RP6-2986	Arm valve
212	RP6-1631	Flexible cable
216	RP6-3174	"C" pin with bracket
217	RP6-0267	M8 autoblock nut
219	RP6-1389	TE M8x90 screw
220	RP6-40657	"C" arm
226	RP6-1611	Tie rod
227	RP6-0816	D.42 washer
228	RP6-0318	TE M10x25 screw
229	RP6-3143	TCTC M8x16 screw
230	RP6-0249	D. 8,4 washer
232	RP6-0955	Pin with split
233	RP6-2759	Joint pin
234	RP6-0381	Rubber bearing
235	RP6-40642	"C" vane
236	RP6-41348	16,3x31,5x2 belleville washer
237	RP6-12751	D50 M10x20 F ball knob
238	RP6-0659	L.rubber bearing
239	RP6-0291	Seeger
245	RP6-0267	M8 autoblock nut
247	RP6-1618	Column
248	RP6-1617	Pulley
250	RP6-0768	D. 45 seeger ring

No.	Part Number	Description
251	RP6-0416	TE M10x35 screw
252	RP6-1956	M10 low nut
253	RP6-1955	6/15/0,25 lock ring
255	RP6-0962	1,8x59x12 T spring
256	RP6-1953	Coupling roll
258	RP6-0552	UNI 7434 ring 7
259	RP6-1954	Coupling pin
260	RP6-0248	TE M8x20 screw
261	RP6-1637	Motor
262	RP6-0293	D.8,4x22x2,5 washer
263	RP6-1732	Clamp for cable
266	RP6-1951	Support
267	RP6-1952	Lever
268	RP6-2417	Warning plate
269	RP6-3216	TE M5x30 screw
270	RP6-1646	"C" coupling
271	RP6-2418	Warning plate
272	RP6-0280	TCEI M6x20 screw
273	RP6-0691	2x20x179 T spring
274	RP6-0292	M6 autoblock nut
275	RP6-1956	M10 low nut
276	RP6-2150	STEI M8x6 UNI 5923 Zn screw
277	RP6-1246	STEI M8x12 ISO 4028 Zn screw

****This field replaceable motor works with all applications of the TC3250 and TC3500 Tire Changers.**



TC3500SS TIRE CHANGER

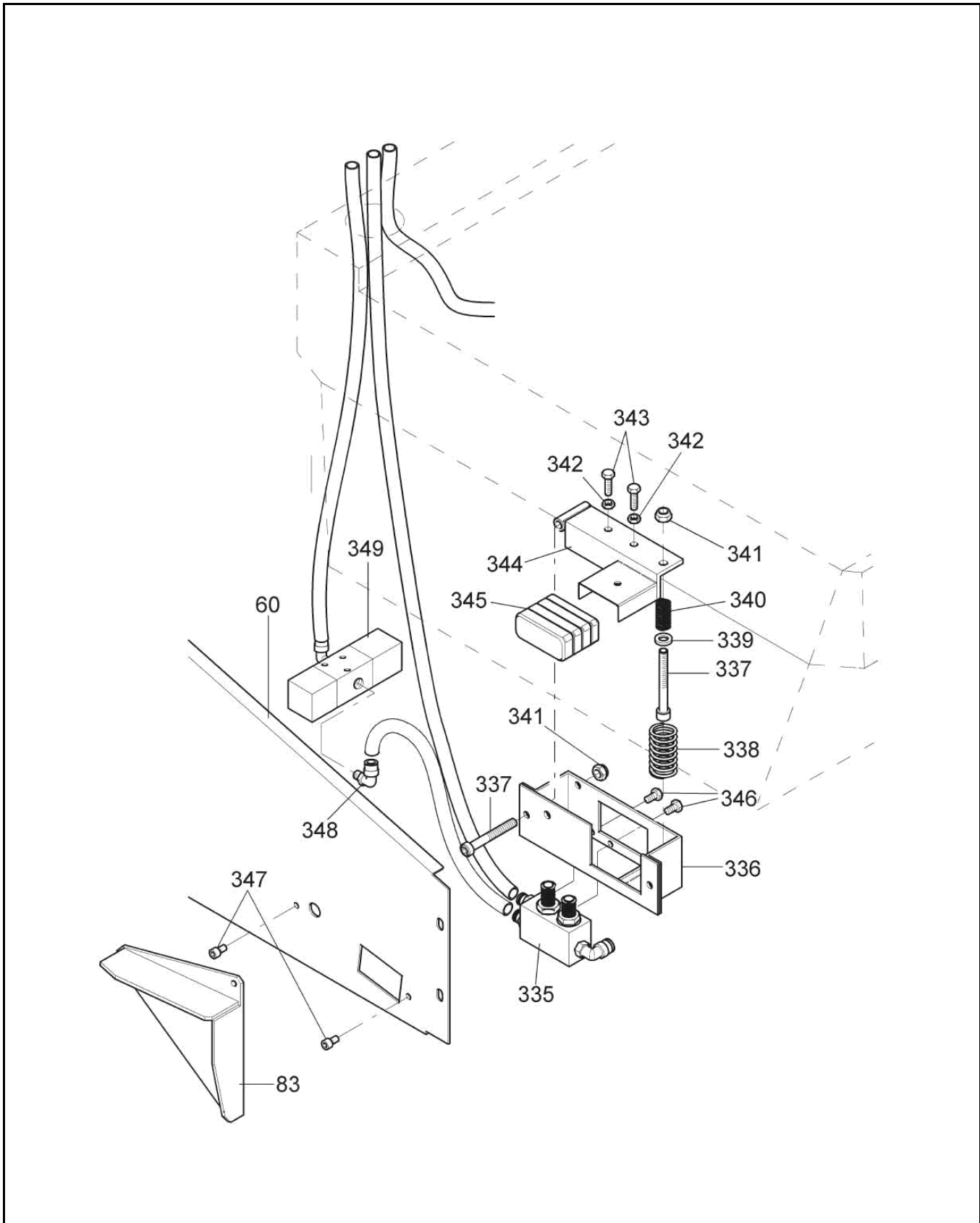
REFER TO NEXT SHEET FOR PARTS DESCRIPTION LISTING

No.	Part Number	Description
216	RP6-1769	4-1/8" L union
274	RP6-1748	M-M 1/8"-1/4" nipple
282	RP6-1049	A.P. tube L= 850
283	RP6-1048	A.P. tube L= 1070
284	RP6-1376	Drilled union
285	RP6-1071	Copper gasket
288	RP6-1672	VTCEI M6x10
294	RP6-1050	Pressure unit
295	RP6-0403	SPL-F 1/8 silencer
381	RP6-1764	Micro regulator

No.	Part Number	Description
384	RP6-2045	"C" Reservoir
385	RP6-1763	MF 1/4" nipples
386	RP6-1730	Suction extension
387	RP6-0843	2043 O-ring
388	**RP6-2286	"C" Hydraulic Pump
389	RP6-1073	Union with valve
390	RP6-1727	Long bracket
391	RP6-1542	Manufacturer little nameplate
392	RP6-1061	4-M5 T union

****NOT AVAILABLE AS A WARRANTY ITEM AFTER 90 DAYS PAST INSTALL DATE.**

****This field replaceable motor works with all applications of the TC3250 and TC3500 Tire Changers.**



TC3500SS TIRE CHANGER

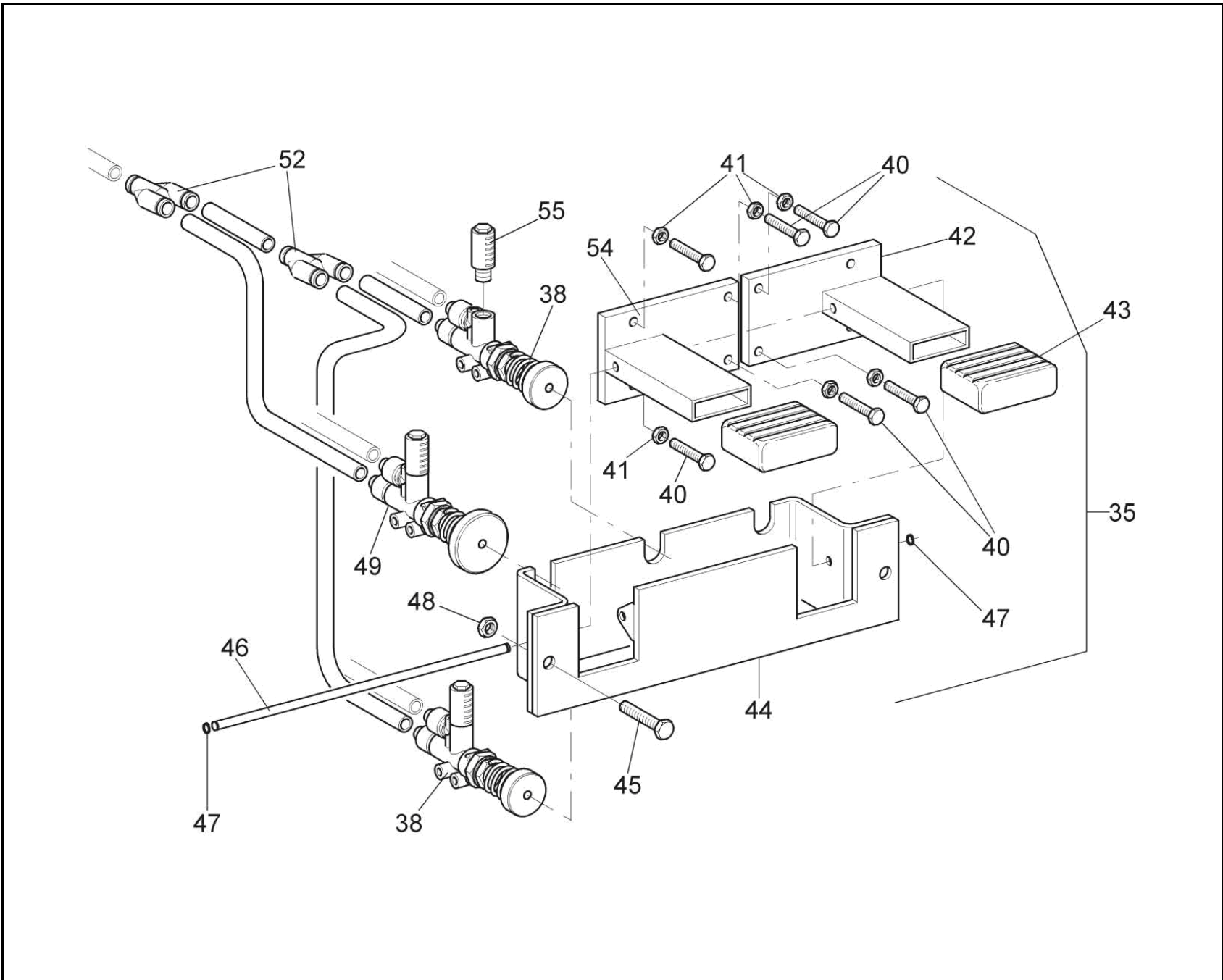
REFER TO NEXT SHEET FOR PARTS DESCRIPTION LISTING

PARTS DESCRIPTION LISTING

No.	Part Number	Description
60	RP6-12481	Left Case
83	RP6-2173	Pedal Protection
335	RP6-7304	Two-Stage Valve
336	RP6-0569	Pedal Supports
337	RP6-0471	TCEI M8x60 UNI 5931 Screw
338	RP6-0553	27x2x60 C Spring
339	RP6-0249	D.8 Washer
340	RP6-2364	2x12,8x38 C Spring
341	RP6-0267	M8 Self-Locking Nut

No.	Part Number	Description
342	RP6-0281	M6 Low Nut
343	RP6-0269	TE M6x20 UNI 5739 Screw
344	RP6-0564	Inflation Pedal
345	RP6-0173	Pedal Protection
346	RP6-0628	TE M6x12 UNI 5739 ZN Screw
347	RP6-0250	TCEI M6x16 Screw
348	RP6-1091	8-1/8" Rotary L Union
349	RP6-790090110	Inflation Valve (Integrated Fittings)

TC3500SS TIRE CHANGER
REFER TO NEXT SHEET FOR PARTS DESCRIPTION LISTING



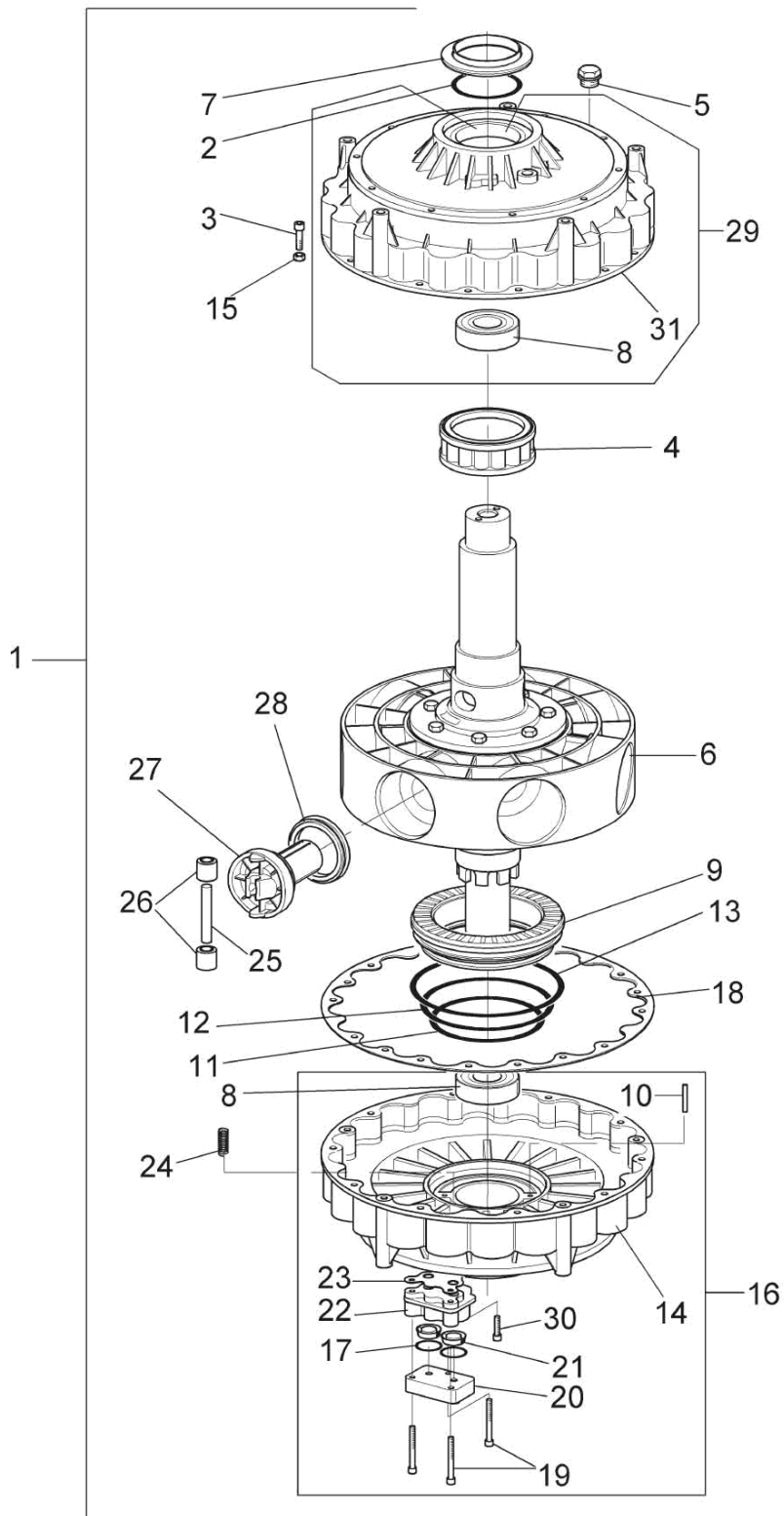
No.	Part Number	Description
35	**RP6-2983	Pedal Complete
38	RP6-2989	3-2 Valve D.30 Pan
40	RP6-0269	TE M6 x 20 Screw
41	RP6-0281	M6 Low Nut
42	RP6-1273	Right Pedal
43	RP6-0173	Pedal Protection
44	RP6-0018	Pedal Support
45	RP6-0248	TE M8 x 20 Screw

No.	Part Number	Description
46	RP6-0232	Pedal Board Pin
47	RP6-0552	D.7 Ring
48	RP6-0267	M8 Autoblock Nut
49	RP6-2988	3-2 Valve D.42 pan
52	RP6-325181	V8 Union
54	RP6-1274	Left Pedal
55	RP6-0403	1/8" Silencer

****NOT AVAILABLE AS A WARRANTY ITEM AFTER 90 DAYS PAST INSTALL DATE.**

****This field replaceable motor works with all applications of the TC3250 and TC3500 Tire Changers.**





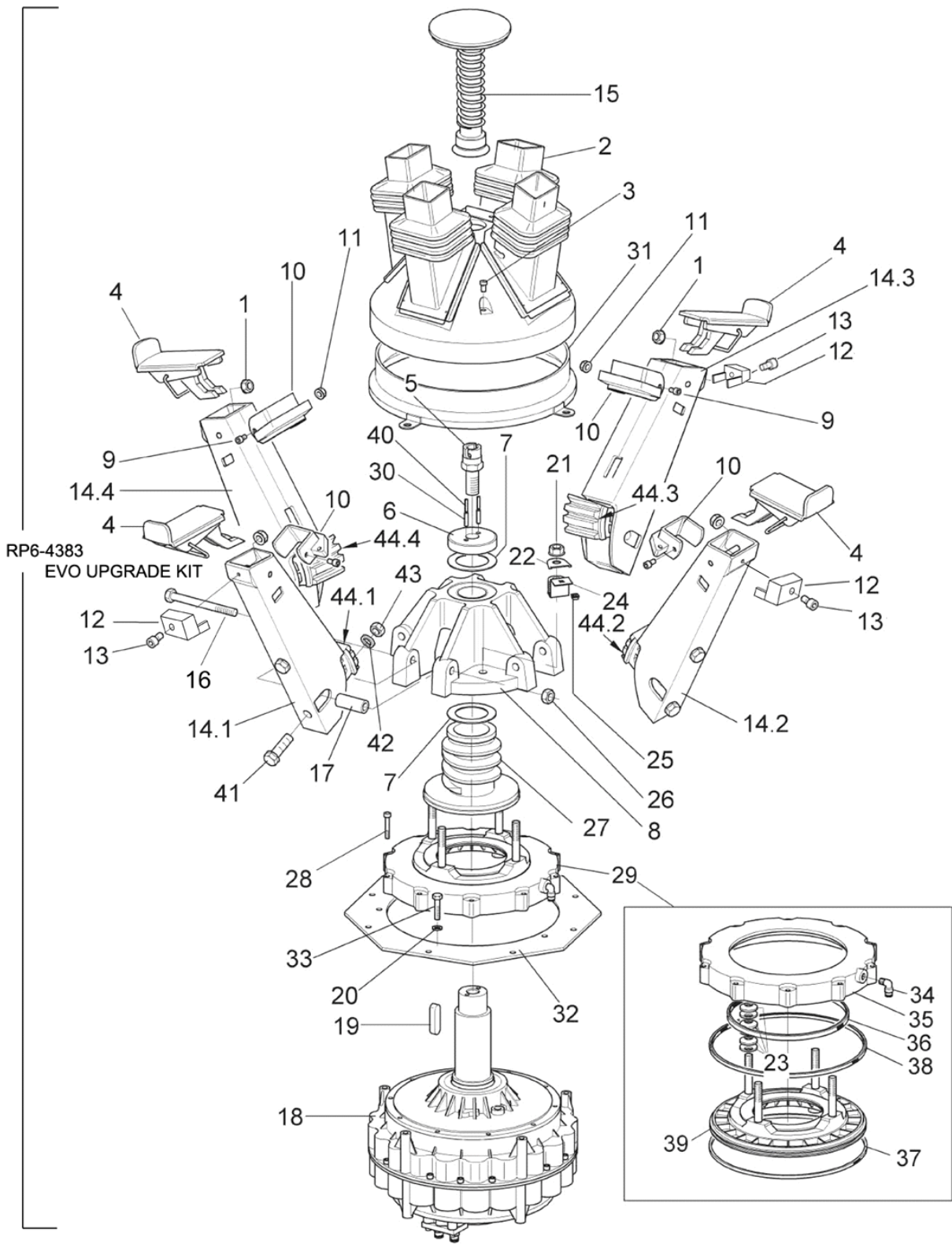
TC3500SS TIRE CHANGER

REFER TO NEXT SHEET FOR PARTS DESCRIPTION LISTING

No.	Part Number	Description
1	RP6-1637	Motor
2	RP6-1987	O-ring 145
3	RP6-11346	TCEI M6x20 screw
4	RP6-0286	Filter
5	RP6-4183	3/8" plug+ gasket
6	RP6-13817	Shaft unit + rotor
7	RP6-1986	Seal ring
8	RP6-0198	Bearing
9	RP6-129990	Distributor
10	RP6-0279	D.4x30 pin
11	RP6-13812	O-ring seal 4425
12	RP6-0607	O-ring 250
13	RP6-0608	O-ring 256
14	RP6-13001	Lower frame
15	RP6-4137	M6 biblock nut
16	RP6-13011	"C" lower frame

No.	Part Number	Description
17	RP6-0819	O-ring 2100
18	RP6-3866	Motor gasket
19	RP6-0764	TCEI M6x45 screw
20	RP6-9218	Cover with cartridges "C"
21	RP6-0718	Membrane for VSC
22	RP6-0716	VSC body
23	RP6-0836	Gasket for VSC
24	RP6-0042	HL 10x25 spring
25	RP6-0219	10x60 pin
26	RP6-0045	Roll
27	RP6-91974	D.70 piston with flat band
28	RP6-12208	70x53x10 piston gasket
29	RP6-0614	"C" upper frame
30	RP6-0280	TCEI M6x20 screw
31	RP6-0621	Upper frame

****This field replaceable motor works with all applications of the TC3250 and TC3500 Tire Changers.**



TC3500SS TIRE CHANGER

REFER TO NEXT SHEET FOR PARTS DESCRIPTION LISTING

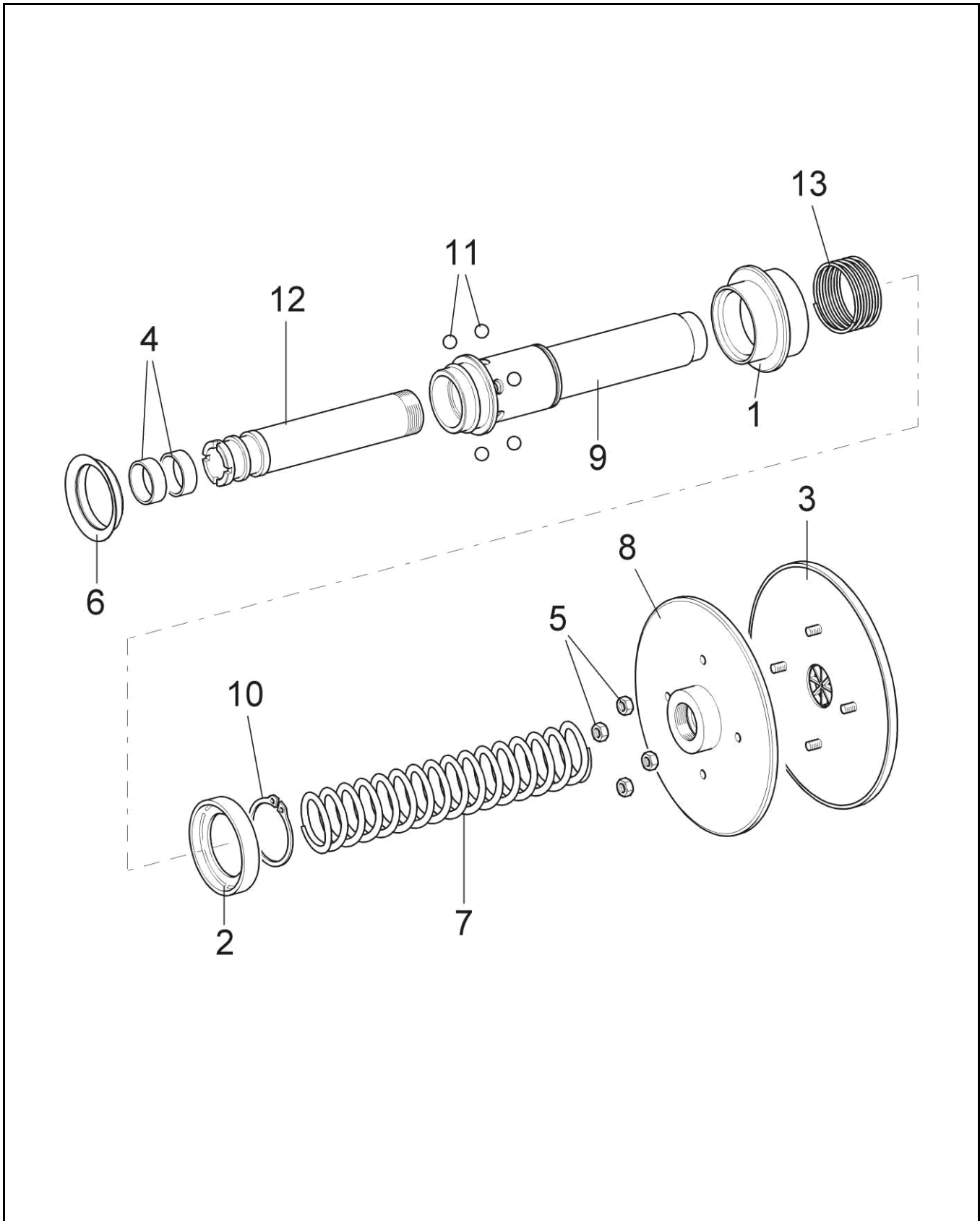
No.	Part Number	Description
1	RP6-1223	M8 middle nut
2	RP6-3663	Cover with bellows
3	RP6-3665	TCTC PH M6x12 screw
4	RP6-8659	22" EVO rubber jaw
5	RP6-7456	Screw for EVO bearing
6	RP6-6041	D.77 washer
7	RP6-0051	Thrust washer
8	RP6-3672	EVO cap
9	RP6-3670	TCEI M8x65 screw
10	RP6-3659	"C" retainer for arm
11	RP6-1814	M8 flanged nut
12	RP6-40032	Pad
13	RP6-9670	TCEI M8x14 UNI 5931 Zn screw
14	RP6-3658	Arm
14.1	RP6-3673	EVO arm No 1
14.2	RP6-3674	EVO arm No 2
14.3	RP6-3675	EVO arm No 3
14.4	RP6-3676	EVO arm No 4
15	RP6-11449	Evo wheel bearing \varnothing 6,5"
16	RP6-3829	TE M12x120 screw
17	RP6-0205	Pin for arm
18	RP6-1637	1022 "C" motor
19	RP6-0221	16x10x50 UNI tongue
20	RP6-7005	Fe A8 UNI 8842 washer
21	RP6-0611	M12 triblock nut
22	RP6-3110	Pointer for Belleville washer

No.	Part Number	Description
23	RP6-1998	28x12,2 Belleville washer
24	RP6-3104	Support plate
25	RP6-3664	M6 crated nut
26	RP6-2807	M12 triblock nut
27	RP6-0050	Screw
28	RP6-0764	TCEI M6x45 screw
29	RP6-0354	"C" brake
30	RP6-0284	6x20 UNI 6873 elastic pin
31	RP6-3106	Brake cover
32	RP6-0027	Ring
33	RP6-0347	TE M8X35 screw
34	RP6-0204	8 – 1/8" union
35	RP6-9372	Brake cylinder
36	RP6-1966	Gasket
37	RP6-2043	Guide ring
38	RP6-2042	Gasket
39	RP6-14194	Brake disc
40	RP6-0615	3,5x20 UNI 6873 elastic pin
41	RP6-3668	TE M10x30 flanged screw
42	RP6-2638	Sector gear washer
43	RP6-1812	M10 ISO 2320 Zn triblock nut
44.1	RP6-3678	Sector gear No 1
44.2	RP6-3679	Sector gear No 2
44.3	RP6-3680	Sector gear No 3
44.4	RP6-3681	Sector gear No 4

PARTS DESCRIPTION LISTING

No.	Part Number	Description
85	RP6-0622	D. 8 gasket
86	RP6-325181	D.8 3-way union
320	RP6-4115	Screened pipe L= 800
321	RP6-0475	Hose clamp
322	RP6-0482	1/8" male rubber holder
324	RP6-0476	1/2"-1/2" T union
325	RP6-0477	1/2" - 1/4" reduction
326	RP6-2598	6430 8-1/4" union
329	RP6-7148	USA "C" inflation valve
330	RP6-0628	TE M6x12 UNI 5739 Zn screw
332	RP6-0434	"C" ASME reservoir
333	RP6-0142	8-1/4" L fixed union
334	RP6-1915	Plug
335	RP6-7304	Two-stage valve
336	RP6-0569	Pedal support

No.	Part Number	Description
337	RP6-0471	TCEI M8x60 screw
338	RP6-0553	2x27x60 C spring
339	RP6-0249	D. 8 washer
340	RP6-2364	2x12.8x38 C spring
341	RP6-0267	M8 autoblock nut
342	RP6-0281	M6 low nut
343	RP6-0269	TE M6x20 screw
344	RP6-0564	Inflation pedal
345	RP6-0173	Pedal protection
346	RP6-0267	M8 autoblock nut
347	RP6-0250	TCEI M6x16 screw
352	RP6-0510	12,3x1x24 C spring
353	RP6-10354	Dual Inflation Ring
413	RP6-0481	VSC valve
414	RP6-7868	Dual Inflation Ring Valve

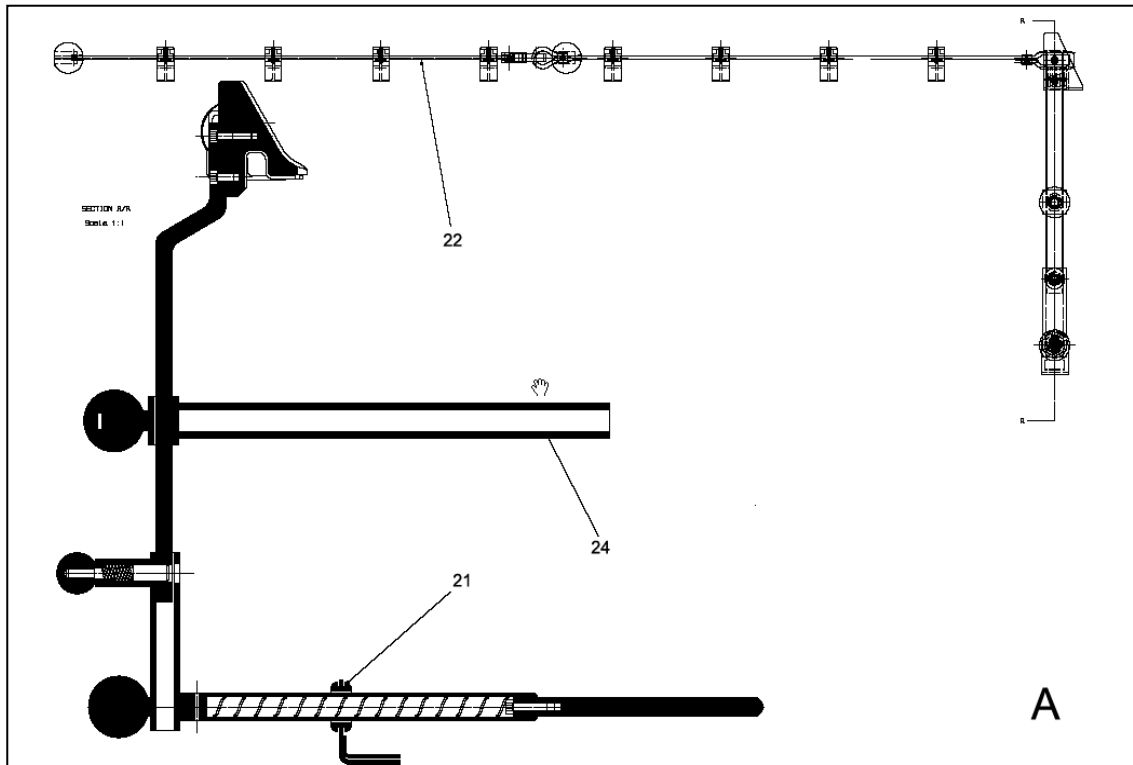
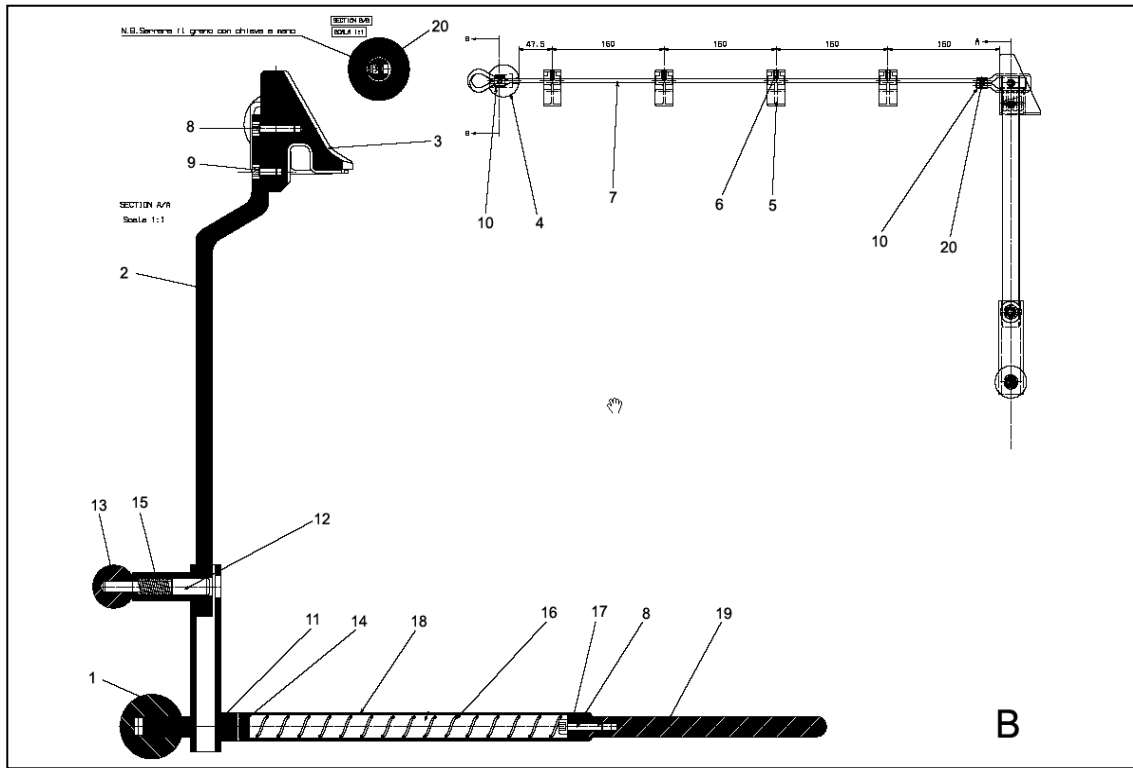


TC3500SS TIRE CHANGER

REFER TO NEXT SHEET FOR PARTS DESCRIPTION LISTING

No.	Part Number	Description
1	RP6-10814	EVO sleeve
2	RP6-11224	Protection ring
3	RP6-10788	"C" bearing rubber base
4	RP6-2810	25-30-9.7 guide ring
5	RP6-0281	M6 UNI 5589 low nut
6	RP6-3422	VS 50 front seal gasket
7	RP6-0575	44x4x330 Spring

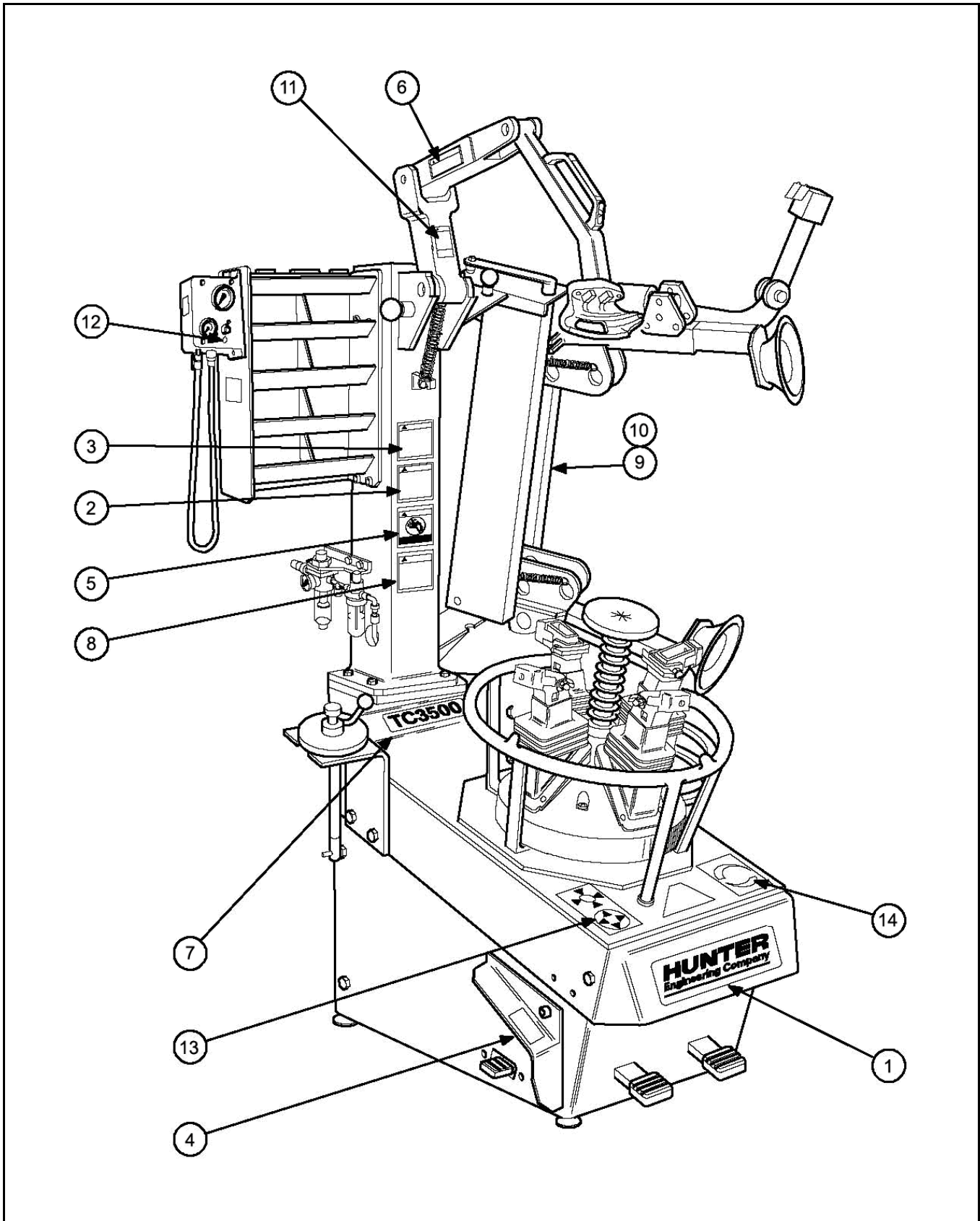
No.	Part Number	Description
8	RP6-10791	"C" upper bearing
9	RP6-7472	"C" lower bearing
10	RP6-0768	D. 45 seeger ring
11	RP6-10821	Ø 9.5 steel ball
12	RP6-7460	Guide pipe
13	RP6-10826	2.5x50x95 Compression Spring



TC3500SS TIRE CHANGER

REFER TO NEXT SHEET FOR PARTS DESCRIPTION LISTING

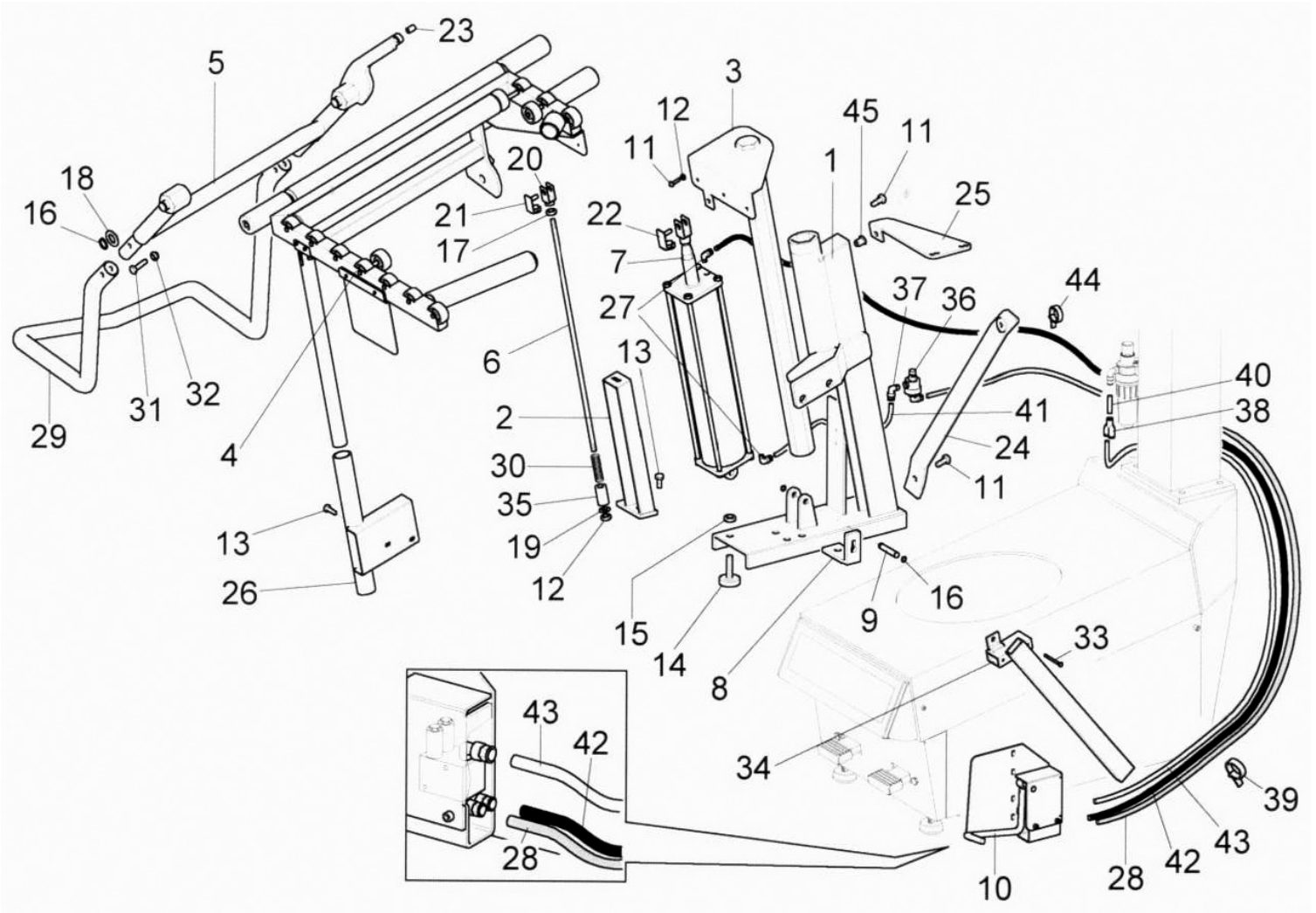
No.	Part Number	Description	No.	Part Number	Description
A	RP6-11216	28" Bead Tail Depressor w/ Traction Bar	21	RP6-2164	Bracket, Bead Depresser Tool
B	RP6-12072	28" Bead Tail Depressor w/o Traction Bar	22	RP6-11675	Rope Cord Extension
1	RP6-0832	Ball Knob	24	RP6-12068	Traction Bar
2	RP6-11215	Arm			
3	RP6-2037	Main Rubber Wedge			
4	RP6-1669	Bead Pusher Knob/Ball			
5	RP6-1589	Rubber Wedge			
6	RP7-8045161200	Set Screw			
7	RP6-1673	Rope Cord			
8	RP6-1671	Screw VSTEI M6x12 UNII5931			
9	RP6-1244	Screw VSTEI M6x12 UNII5931			
10	RP6-1281901	Clamp			
11	RP6-11212	Guide			
12	RP6-8812	Plunger			
13	RP6-8813	Ball 30 MM, M6			
14	RP6-0803	Spine Elastic 4x20			
15	RP6-8830	Spring 1.1x11.8x35			
16	RP6-1667	Spring			
17	RP6-1670	Plug			
18	RP6-1665	Tube			
19	RP6-1666	Plunger			
20	RP6-11017	Screw VSTEI m8x8 UNI5929			



TC3500SS TIRE CHANGER

REFER TO NEXT SHEET FOR PARTS DESCRIPTION LISTING

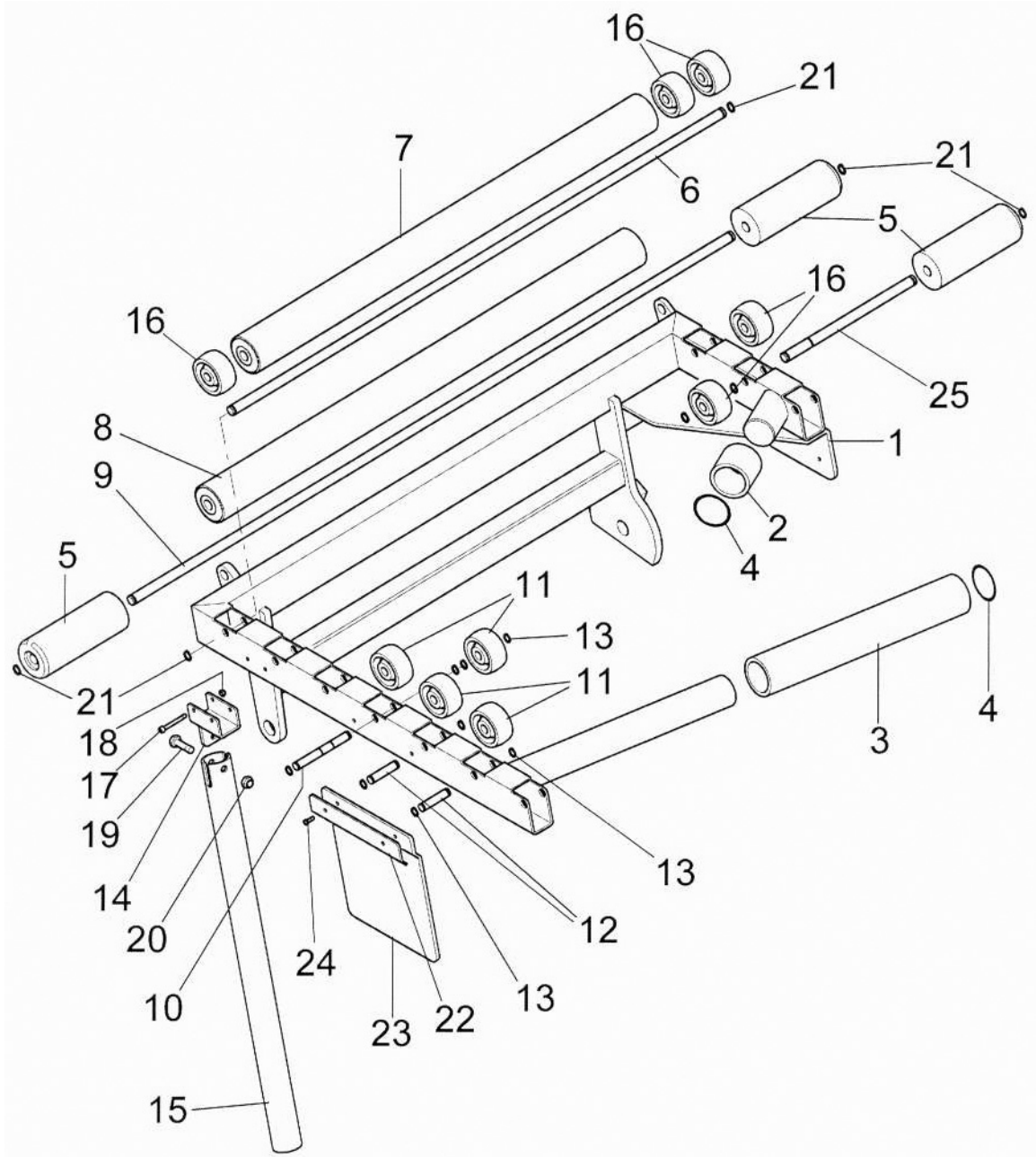
No.	Part Number	Description
1	128-279-2	DECAL, HUNTER ENGINEERING COMPANY
2	128-284-2	DECAL, WARNING, READ AND UNDERSTAND THE INSTRUCTION MANUAL BEFORE OPERATING
3	128-285-2	DECAL, WARNING, DO NOT EXCEED THESE PRESSURE LIMITATIONS
4	128-286-2	DECAL, WARNING, ACTIVATE AIR INFLATION RING ONLY WHEN SEATING BEAD
5	128-287-2	DECAL, WARNING, DO NOT LEAN OR REACH OVER TIRE WHEN INFLATING
6	128-435-2	DECAL, ATTENTION, REMOVE CLIP-ON WEIGHTS BEFORE USE TO PREVENT DAMAGE
7	128-601-2	DECAL, TC3500
8	128-485-2	DECAL, REVIEW TAPE BEFORE USING
9	128-487-2	DECAL, CAUTION DO NOT LOCK PIN
10	128-488-2	DECAL, ROLLER PIN LOCK INSTRUCTION
11	128-489-2	DECAL, MOUNTING ARM INCLINATION
12	128-501-2	DECAL, MANUAL BLEED VALVE
13	128-502-2	DECAL, CLAMPING DIRECTIONS
14	128-503-2	DECAL, ROTATION DIRECTIONS



WHEEL LIFT TIRE CHANGER KIT
REFER TO NEXT SHEET FOR PARTS DESCRIPTION LISTING

No.	Part Number	Description
1	RP6-9301	Frame
2	RP6-9310	Rod support
3	RP6-9314	Shaft with plate
4	RP6-9485	Support with rollers
5	RP6-9924	Tilting frame
6	RP6-9344	Tilting rod
7	RP6-9345	Cylinder
8	RP6-9343	Lower angular plate
9	RP6-9350	Shaft D. 16 for cylinder
10	RP6-9361	Pedal complete
11	RP6-6386	Screw M8 x 25 flanged
12	RP6-2000	M8 self locking nut
13	RP6-0974	Screw M8x12
14	RP6-0013	Rubber foot
15	RP6-0266	Nut M12
16	RP6-1387	Circle D.16
17	RP6-0257	Nut M8
18	RP6-0770	Washer 16 x 22 x 1
19	RP6-0293	Washer 8 x 22 x 2.5
20	RP6-0734	Fork M8 x 16
21	RP6-5387	Shaft with clip M8 x 16
22	RP6-5958	Shaft with clip M10 x 20

No.	Part Number	Description
23	RP6-9502	Bushing DU 8 x 10 x 8
24	RP6-9498	Rear rod
25	RP6-9480	Rod for column
26	RP6-9491	Front guide C
27	RP6-9549	Fixation plate fitting
28	RP6-1247	Screw M8 x 20
29	RP6-9334	Protected wheel support
30	RP6-11176	Spring C2 x 16 x 90
31	RP6-0796	Screw m8 x 40
32	RP6-0267	Self locking nut M8
33	RP6-0262	Screw M8 x 50
34	RP6-11447	Distant ail lever funnel
35	RP6-11177	Dictator rod
36	RP6-10831	Quick release 1/8
37	RP6-2304	Connector L6- 1/8
38	RP6-325181	Connector V d.8
39	RP6-5717	Hose tightened
40	RP6-1857	Hose 8 x 6 L= 40mm black
41	RP6-11194	Hose 6 x 4 L= 95mm black
42	RP6-1172	Hose 6 x 4 L= 1450mm black
43	RP6-0760	Hose 8 x 6 L= 1400mm black
44	RP6-0178	Black Hose Clamp
45	RP6-5569	Threaded insert M8

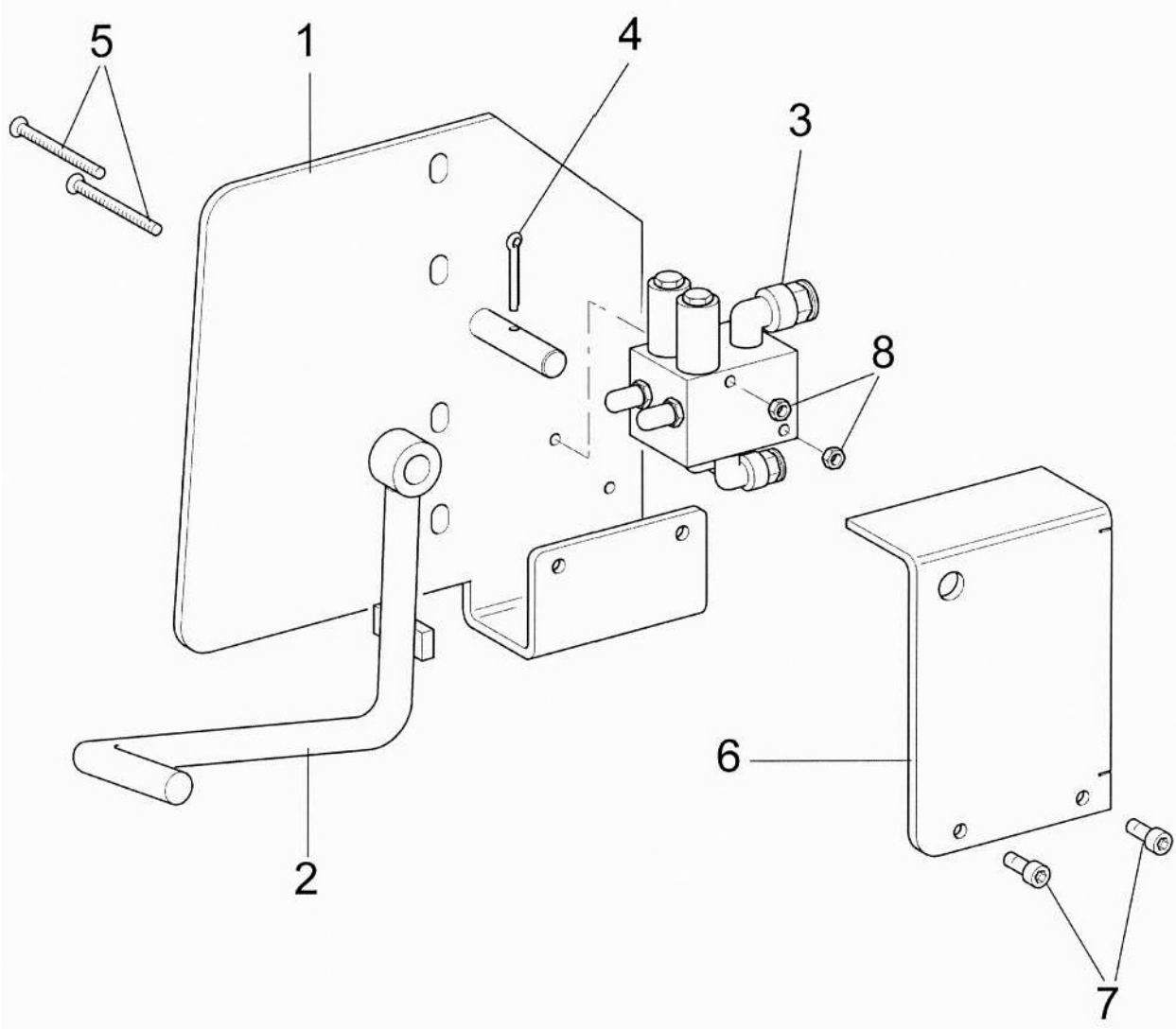


WHEEL LIFT TIRE CHANGER KIT

REFER TO NEXT SHEET FOR PARTS DESCRIPTION LISTING

No.	Part Number	Description
1	RP6-9319	Wheel support without rollers
2	RP6-9486	Roller D. 40 x 3 L=43 mm
3	RP6-9487	Roller D. 40 x 3 L=237 mm
4	RP6-9488	Gasket 3,53 x 25,8
5	RP6-9489	Side roller
6	RP6-9490	Shaft D. 10 for rollers
7	RP6-5474	Roller D. 40 L=528 mm
8	RP6-5473	Roller D. 40 L=488 mm
9	RP6-9507	Shaft D. 10 for rollers
10	RP6-9465	Shaft D. 8
11	RP6-5524	Roller D. 39
12	RP6-5523	Short shaft for roller
13	RP6-0268	Circle D. 8

No.	Part Number	Description
14	RP6-9495	Rod support
15	RP6-9494	Rod for guide
16	RP6-5248	Roller D. 39
17	RP6-0764	Screw M6 x 40
18	RP6-0292	Self locking nut M8
19	RP6-0796	Ring D. 10
20	RP6-0267	Plate for rubber
21	RP6-0543	Rubber 240 x 150 x 2,5
22	RP6-9500	Screw M5 x 10
23	RP6-9501	Shaft D. 10 L=168mm
24	RP6-5794	Screw M5 x 10
25	RP6-11173	Shaft D. 10 L=168mm



WHEEL LIFT TIRE CHANGER KIT
REFER TO NEXT SHEET FOR PARTS DESCRIPTION LISTING

No.	Part Number	Description
1	RP6-9929	Pedal Base
2	RP6-5916	Pedal
3	RP6-9362	Pedal valve
4	RP6-5915	Split locking pin

No.	Part Number	Description
5	RP6-1247	Screw M4 X 40
6	RP6-9846	Pedal cover
7	RP6-1001	Screw M45 x 8
8	RP6-1191	Nut M4